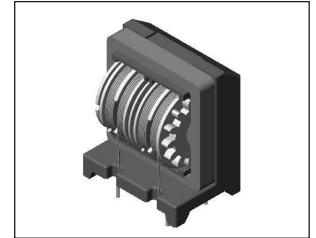
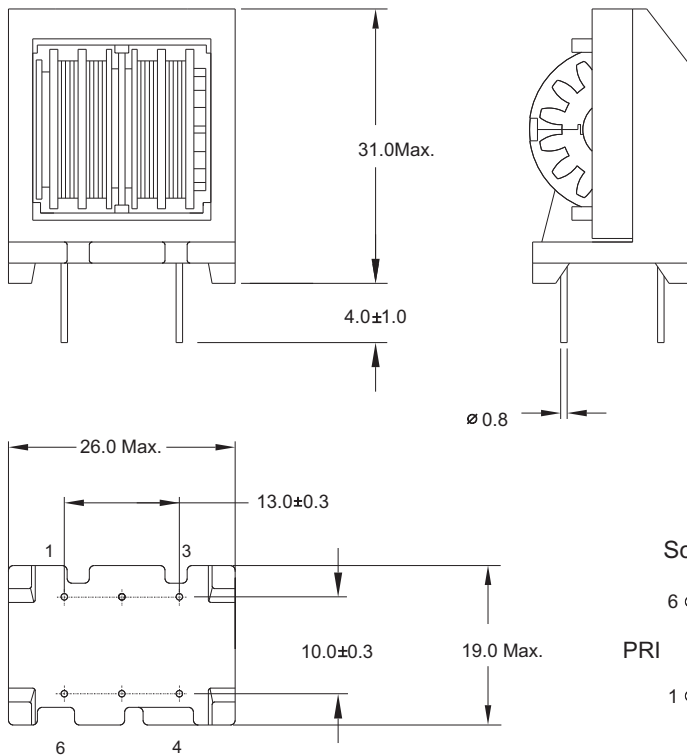


Common Chokes

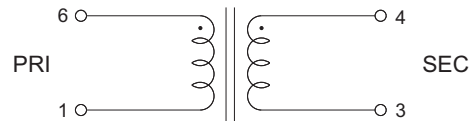
EMI Common-Mode Suppression Inductors

LFZ24V Type

Mechanical Dimension: Unit: mm



Schematic :



Electrical Characteristics:

■ AT 25°C, 40KHz/1V Tested:

PART NO.	INDUCTANCE (mH) MIN	DCR (mΩ) MAX	RATED CURRENT (Aac)	TEMPERATURE RISE (°C) MAX
LFZ24V01	62.0	2015	0.30	45
LFZ24V02	54.0	1815	0.40	45
LFZ24V03	43.0	1390	0.50	45
LFZ24V04	27.0	930	0.60	45
LFZ24V05	17.0	550	0.90	45
LFZ24V06	14.0	490	1.0	45
LFZ24V07	11.0	360	1.1	45
LFZ24V08	7.8	250	1.4	45
LFZ24V09	6.4	220	1.5	45
LFZ24V10	4.8	155	1.8	45
LFZ24V11	3.5	115	2.0	45
LFZ24V12	2.3	87	2.4	45

* WITHSTANDING VOLTAGE BETWEEN L1 & L2 1.5KV 1 MINUTE
* GOOD DIFFERENCE IN WINDING L1 & L2 INDUCTANCE



DELTA ELECTRONICS, INC.

(TAOYUAN PLANT CPBG) 252, SAN YING ROAD, KUEISAN INDUSTRIAL ZONE, TAOYUAN SHIEN, 333, TAIWAN, R.O.C.

TEL: 886-3-3591968; FAX: 886-3-3591991

<http://www.deltaww.com>